



# YUR.POWER

## G-P240

### Multicrystalline Solar Panels

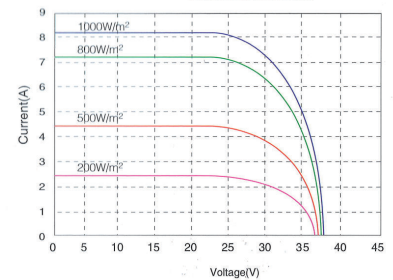
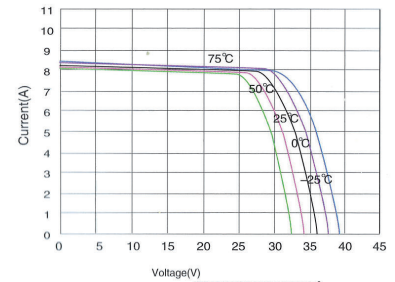
#### Specifications

• <b>Panel Type</b>	240 Wp Multicrystalline silicon photovoltaic module
• <b>Maximum Power (Pmax)</b>	240 W
• <b>Voltage @ Pmax (Vpm)</b>	30,2 V
• <b>Current @ Pmax (Ipm)</b>	7,95 A
• <b>Open Circuit Voltage (Voc)</b>	37,2 V
• <b>Short Circuit Current (Isc)</b>	8,33 A
• <b>Tolerance</b>	± 5 %
• <b>Maximum System Voltage</b>	1000 V
• <b>Maximum series fuse rating</b>	15 A
• <b>Temperature Coefficients of Pmax (%)</b>	-0,38 % /°C
• <b>Temperature Coefficients of Voc (%)</b>	-0,32 % /°C
• <b>Temperature Coefficients of Isc (%)</b>	+0,08 % /°C
• <b>NOCT (Norminal Operating Cell Temp)</b>	46 °C ± 2 °C
• <b>Operating Temperature</b>	-40 to +85 °C
• <b>System Cell</b>	156 mm x 156 mm Multicrystalline silicon
• <b>No. of cells &amp; connections</b>	60 pcs in series (6x10)
• <b>Module Size (WxLxH)</b>	1640 x 990 x 50 mm
• <b>Weight</b>	Approximately 19 Kg
• <b>Relative humidity</b>	0 to 100 %
• <b>Resistances</b>	227g steel ball fall down from 1 m height and 60 m/s wind
• <b>Mechanical load test</b>	2400 Pa

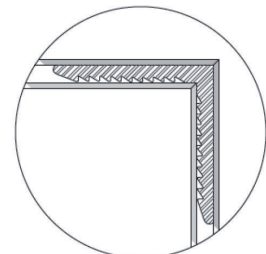
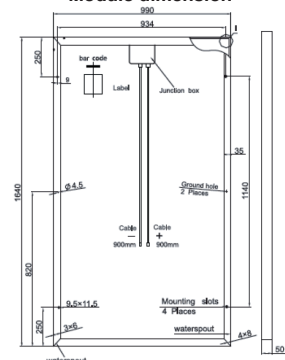
#### Construction

• <b>Front</b>	Glass
• <b>Encapsulation</b>	EVA/Cells/EVA/TPT
• <b>Bypass Diodes</b>	3 by-pass
• <b>Junction Box Type</b>	IP65 TUV certified
• <b>Output cable</b>	MC Type connectors TÜV (Negative 1100 mm, Positive 1100 mm)
• <b>Frame (Material, Corners, etc)</b>	Anodized aluminium
• <b>Certification</b>	CE / IEC 61215 / IEC 61730-1 / IEC 61730-2

I-V Curves



Module dimension



measured at STC (Standard Test Condition; 1000 W/m<sup>2</sup> irradiance, AM 1.5G and 25 °C)

**Warranty Notice:** 5 years on materials. 10 years of 90 % output, 25 years of 80 % output

**EAN :** TBA

**Yuraku Pte Ltd**  
11 Collyer Quay,  
#10-04 The Arcade, Singapore 049 317  
Tel: +65 6238 2158  
Fax: +65 6238 0076  
Website: www.yuraku.com.sg

**Yuraku S.r.l**  
Via Fratelli Rosselli 3/2  
20019 Settimo Milanese (MILANO) Italy  
Tel: +39 02 3351 4444  
Fax: +39 02 3359 0580  
Website: www.yuraku.it

**Yuraku, SL**  
C/Florida Nº 1 (nave 4) Pol. Ind. Villapark  
28670 – Villaviciosa de Odón – Madrid – España  
Tel: +34 91 6657 423  
Fax: +34 91 6166 324  
Website: www.yuraku.es

create >> excite >> inspire

Terms and Specifications are subjected to change without notice.  
©2011 YURAKU PTE LTD