

YUMP3 S 350

User's Guide

Congratulations!

Thank you for purchasing YUMP3 S 350. This User's Guide is an introduction to your MP3 Digital Player and the operating instructions. Before using your MP3 Player for the first time, please read all the information in the guide so you will know how to use all the features of your product.

Our company bears no responsibility for the loss and damage of personal data caused by improper operation of software and hardware, or from improper product or hardware maintenance or from other accidental events, nor do we bear any responsibility for the indirect loss caused by the aforementioned events. We bear no responsibility for accidental loss that may occur from using this guide or any third party claim for compensation caused by using our product.

The Product design and specification information contained in this guide may change without prior notice. Please visit our website www.yuraku.com.sg for more information.

Contents

Introducing your MP3 Player

| | |
|--|---|
| Accessories and Parts..... | 4 |
| Connecting the player to your computer | 4 |
| Turning your MP3 Player on/off..... | 5 |
| Connecting the earplugs..... | 5 |
| LCD display..... | 5 |

Operating your MP3 Player

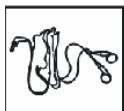
| | |
|------------------------------------|----|
| Playing music..... | 6 |
| Deleting files..... | 7 |
| Editing song lyrics..... | 7 |
| Recording..... | 8 |
| Playing back recordings | 8 |
| Using the FM Radio..... | 9 |
| Personalising your MP3 Player..... | 9 |
| Troubleshooting..... | 12 |

Customer Support

| | |
|-------------------------------|----|
| Technical Specifications..... | 12 |
| Support DRM10 function..... | 13 |

Introducing your MP3 Player

Accessories and Parts



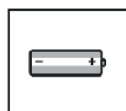
Earphone



Drivers CD-ROM



USB Cable

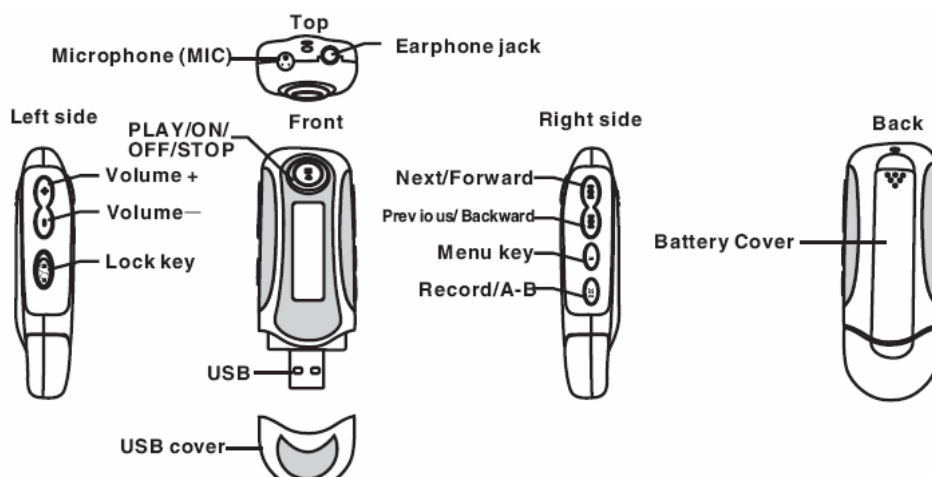


Battery



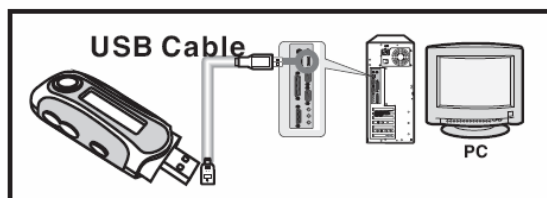
Manual

Control

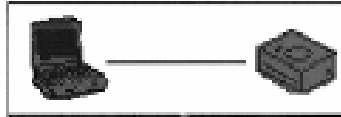


Connecting the Player to your computer

Connect the USB cable to your computer as follows:



When the MP3 Player is connected to your PC, you will see the following symbol displayed on the LCD.



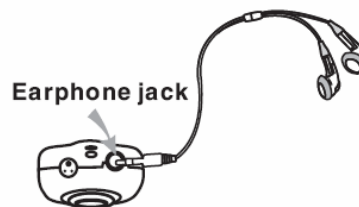
Turning your MP3 Player on/off

1. Ensure your MP3 Player is unlocked.
2. If the MP3 player is locked when the power is on, it will automatically turn off.
3. To turn on the MP3 Player press and hold **PLAY/STOP**.
4. To turn off the MP3 Player press and hold **PLAY/STOP**.



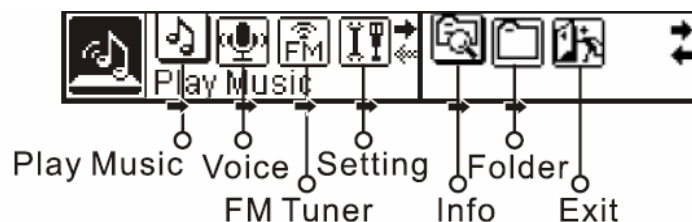
Connecting the earphones

Connect the earphones to the earphone port.

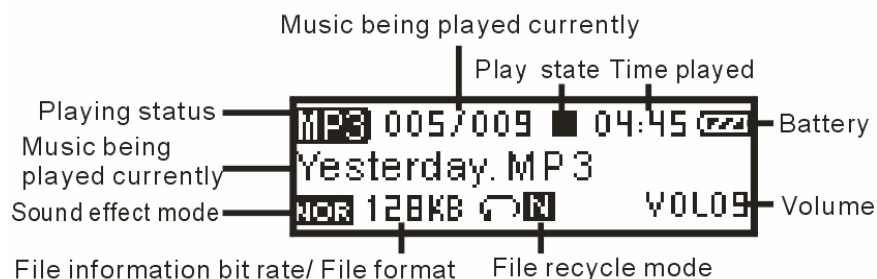


LCD Display

Main menu



Music mode



Recording



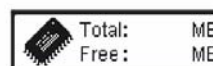
Play recording



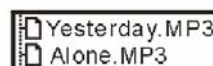
Settings



Memory



Folders



FM Radio



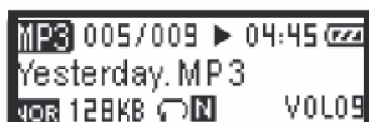
Operating your MP3 Player

Playing music

1. Connect the earphone to EARPHONE port.
2. Set the **LOCK** button to unlock.
3. Press **PLAY** to turn on the player.
4. Press **PRE/NEXT** to select MUSIC mode.



5. Press **PLAY**.



Adjusting play

In Play mode:

1. Press **PRE/NEXT** to go forward or back a track.
2. Press and hold **PRE/NEXT** to fast forward and rewind.
3. Press **PLAY** to pause playing.
4. Press **-/+** button to decrease/increase the volume.

Repeating tracks

1. In Play mode press **A-B** to select the starting point A.
2. Press **A-B** to select the finishing point B.
3. The player will replay the content from point A to point B.



4. Press **A-B** again to return to the normal playing status.

Deleting files

1. Press and hold **PLAY** until the player turns on.
2. Press **MENU** to enter the main menu.



3. Press **PRE/NEXT** to select Folder.



4. Press **MENU** to enter Folder.
5. Press **MENU** to select Play now/Delete.



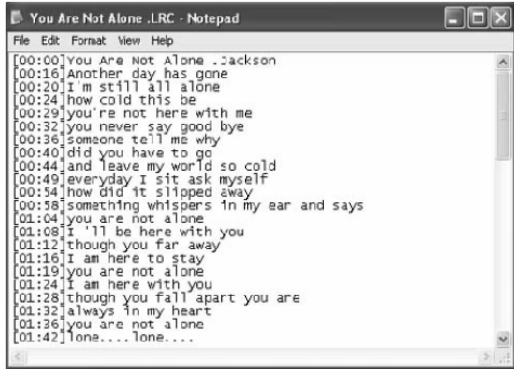
6. Press **MENU** to Delete file.

Editing song lyrics

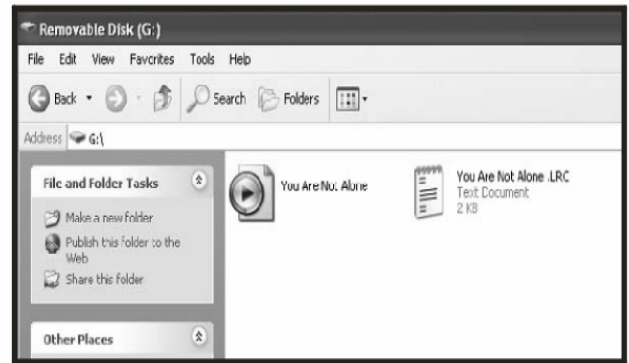
1. Open the Notepad to edit the lyrics of a song.
2. Edit in the format (MM:SS)
3. Save the file with the same name as the song and add an .LRC extension after editing it.
4. Upload the edited file to the player.

5. Press and hold **MENU** in the Play mode to display the lyrics of the song.

① Edit lyric with notepad



② Save files +.LRC



Recording

1. Press and hold **PLAY** until the player turns on.
2. Press and hold **MENU**.
3. Press **PRE/NEXT** button to select Voice.



4. Press **MENU**.
5. Press **REC**.



6. Press **PLAY** to start recording.

Playing back recordings

1. Press and hold **PLAY** until the player turns on.
2. Press and hold **MENU**.
3. Press **PRE/NEXT** to select Voice.
4. Press **MENU** to enter the play recording mode.



5. Press **PLAY** to start playing.
6. Press **+/-** to increase/decrease the volume.

Using the FM Radio

1. Press and hold **PLAY** until the player turns on.
2. Press and hold **MENU**.
3. Press **PRE/NEXT** to select the FM tuner.



4. Press **MENU** to enter the FM mode.



5. Select the next FM channel by pressing and releasing **PRE/NEXT**.
6. Press **+/-** to increase/decrease the volume.
7. Press **REC** to record the programme you are listening to.
8. Press and release **MENU** to stop recording.

Personalising your MP3 Player

1. Press and hold **PLAY** until the player turns on.
2. Press and hold **MENU**.
3. Press **PRE/NEXT** to select **Setting**.



4. Press **MENU** to enter Setting menu. The settings available are:

Equalizer



Repeat mode



Contrast



Backlight



Power set



Recordset



Language



Exit



EQUALIZER

1. In the Setting menu select **EQ**.
2. Press **MENU**.
3. Press **PRE/NEXT** to select Normal, Pop, Rock, Classical, Jazz, Bass.



4. Press **MENU** to confirm.

REPEAT MODE

This allows you to repeat track or shuffle the play order.



1. In the Setting menu select Repeat mode.
2. Press **MENU** to confirm.
3. Press **PRE/NEXT**.
4. The choices are: Normal, Repeat one, Repeat all, Shuffle Repeat, Dir normal, Dir All normal, Dir shuffle repeat.
5. Press **MENU** to confirm.

Setting CONTRAST

1. In the Setting mode select **Contrast**.



2. Press **PRE/NEXT** to adjust contrast.
3. Press **MENU** to confirm.

Setting the BACKLIGHT

This allows you to control how long the backlight stays on. The longer the backlight stays on, the sooner you will exhaust your battery.



1. In the Setting mode select **Backlight**.

2. Press **PRE/NEXT** to adjust the backlight time from 0 (Always off) -5 sec - 10 sec -Always on
3. Press **MENU** to confirm.

Setting POWERSET

You can set the player to switch off after a preset time.



1. In the Setting mode select **Powerset**.
2. Press **MENU** to confirm.
3. The choices are: Disable: 2 min: 10 min: 30 mins
4. Press **MENU** to confirm.

Setting RECORDSET

1. In the Setting mode, navigate to Recordset.



2. Press **MENU** to confirm.
3. Use **PRE/NEXT** to select: 32kb/s - 44kb/s - 64kb/s - 88kb/s
4. Press **MENU** to confirm and exit.

Setting LANGUAGE

1. In the Setting mode select **Language**.



2. Press **MENU** to confirm.
3. Press **PRE/NEXT** to select language.
4. The choices are: English, French, Chinese (Trad), Chinese (Simp), German, Spanish, Italian, Portuguese,
5. Press **MENU** to confirm.

Troubleshooting

| | |
|-----------------------------------|---|
| No Power | <ul style="list-style-type: none"> * Check whether the battery has been inserted properly. |
| No sound is heard from headphone. | <ul style="list-style-type: none"> * Check whether Volume is set to “0” and connect the headphone plugs firmly. * Check whether the headphone plug is dirty. * MP3 may make a static noise and the sound may be cut off if you are using music files that are corrupted. |
| Characters in LCD are corrupted | <ul style="list-style-type: none"> * Check whether the right language has been selected. |
| Download of music files fails. | <ul style="list-style-type: none"> * Check whether USB cable is damaged and is connected properly. * Check whether driver is installed correctly. * Check whether the player’s memory is full. |

Technical Specifications

| Items | Specifications |
|------------------------------|---|
| Memory capacity | 128MB/256MB/512MB/1GB/2GB/4GB |
| Maximum recording time | Around 34 hours |
| Battery | AAA battery |
| USB transfers | PC 2.0 interface |
| LCD | 128 X 32 |
| Languages supported | EN,FR,CN,GR, SP, IT, PT, |
| Size | 89*33*21mm |
| Weight | 29.5g (exclusive of AAA alkaline battery) |
| Memory type | Embedded Flash memory |
| Power supply | 1.5V AAA battery |
| Working temperature | -10°C—50°C |
| Signal/Noise ratio | ≥90dB |
| Output distortion | <0.1% |
| Signal separation degree | >80dB |
| Output frequency | 20HZ-20KHZ |
| Recording sampling frequency | 8KHZ |

SDK35FD DRM10 DEMO INTRODUCTION

Download the DRM (Digital Rights Management) format song from your PC to your MP3 Player. The songs are encrypted so a license is needed to decode them. This Demo uses Microsoft to sample songs to be empowered by DRM. Songs can be downloaded for free from <http://wmtap.smdisp.net/janus/>. Save the license and song to your PC.

Microsoft WMDRM-PD Test Content Web Site - Microsoft Internet Explorer

File Edit View Favorites Tools Help

Back Forward Stop Home Search Favorites Refresh Print Mail Link

Address: http://wmtap.sndsp.net/janus/

Home Summary Detail F.A.Q.

Support

Microsoft WMDRM-PD Test Content Web Site

Overview

This site is designed to allow Microsoft partners to acquire protected Windows Media Content and licenses.

Highlighted Test Cases

| | Corona (v9) Player | | | Crescent (v10) Player | | |
|----------------|--------------------|-------------|-------|-----------------------|-------------|-------|
| Business Model | Musrc Audio | Musrc Video | Movie | Musrc Audio | Musrc Video | Movie |
| Purchase | 9TC1 | 9TC2 | 9TC3 | STC1 | STC2 | STC3 |
| Subscription | 9TC4 | | | CTC1 | | CTC4 |
| Rental | | | 9TC5 | | | STC4 |

What's New

9/1: Added support to allow user to override the documented security levels of the Summary page, and instead use security level = 150. Added row on summary page to indicate if transfer to PD-DRM devices should work. Modified content setup package to include folder for content that will transfer to PD-DRM devices. Additional audio content added. Metering certificate modified.

7/28: Content updated to require individualization. HD content updated. Content added.

Internet

Microsoft Internet Explorer

File Edit View Favorites Tools Help

Back Stop Search Favorites Home

Address http://win7api.msdn.net/nuv/detail.asp?CentID=STC1

Home Summary Detail F.A.Q. Support

Detail

Test Case STC1

This page shows the details of Test Case STC1. You will be able to play or download the Windows Media Audio file associated with the test case, acquire the license, and view the code used to generate the license.

To change to another test case, please visit the [Test Case Summary](#) page, or select a different test case from the list below.

STC1 ▾

Windows Media Content

To download the protected Windows Media content associated with this test case, right click on this link, and select **Save Target As**.

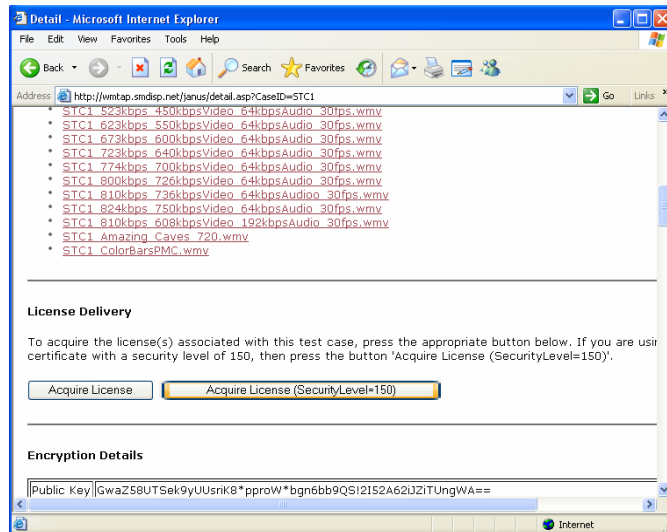
Audio Files

- [STC1_109_44_16_2_CBE.wma](#)
- [STC1_109_4](#) Open
- [STC1_109_4](#) Open in New Window
- [STC1_384](#)
- [STC1_P1_2](#) **Save Target As...** [1_44_2.wma](#)
- [STC1_P1_2](#) Print Target... [1_44_2.wma](#)
- [STC1_P1_2](#) Copy [Nbsp; 44khz 2 wma](#)
- [STC1_P1_2](#) Copy [Nbsp; 44khz 2 wma](#)
- [STC1_P1_2](#) Copy Shortcut [Nbsp; 44khz 2 wma](#)
- [STC1_P1_2](#) Properties

Video Files

- [Add To Favorites...](#)
- [Properties](#)

- 13 -



Your MP3 Player is compatible with Windows XP + SP1 operating system, Windows Media Player 10 or above.

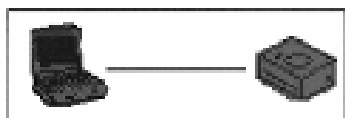
How to download songs

Downloading WMP10

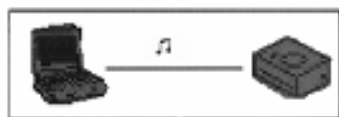
WMP10 is used to download music with copyright protection. USB devices not supporting the MTP protocol cannot be used to acquire the license although the music can be downloaded. MTP is only available in Windows XP. There is no DRM capability for Windows98, Windows2000, etc.

If you use the player to copy songs directly by USB, use equal WMP10 download of songs with the MTP Device.

Demo player connecting to PC

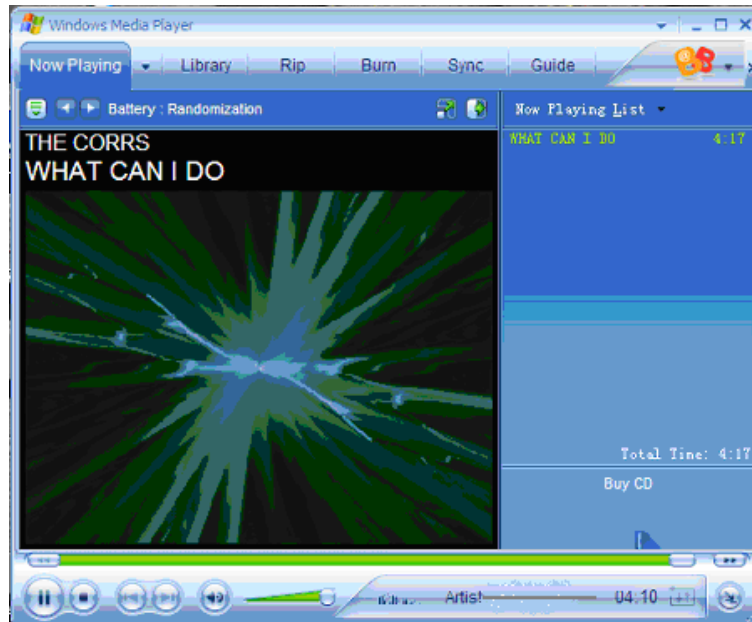


Transferring data between Demo player and PC

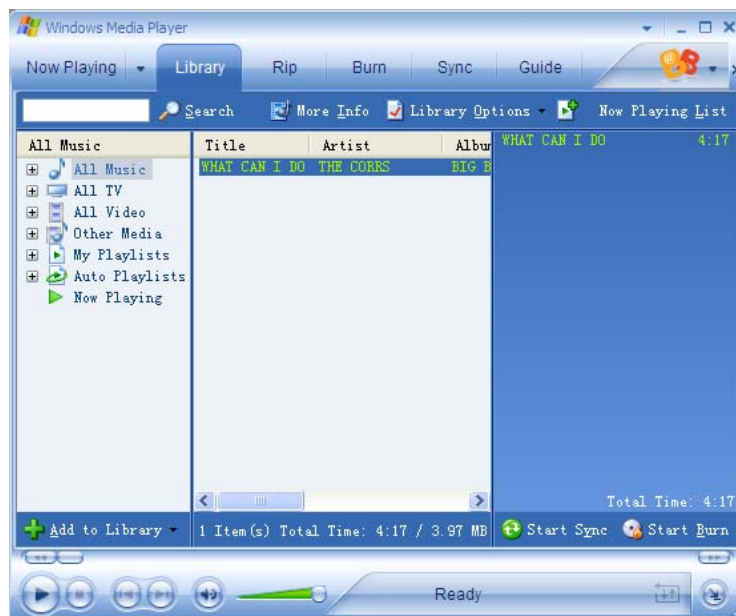


After about 10 seconds, you will be given the option to continue (click **OK**) or cancel the request (click **Cancel**).

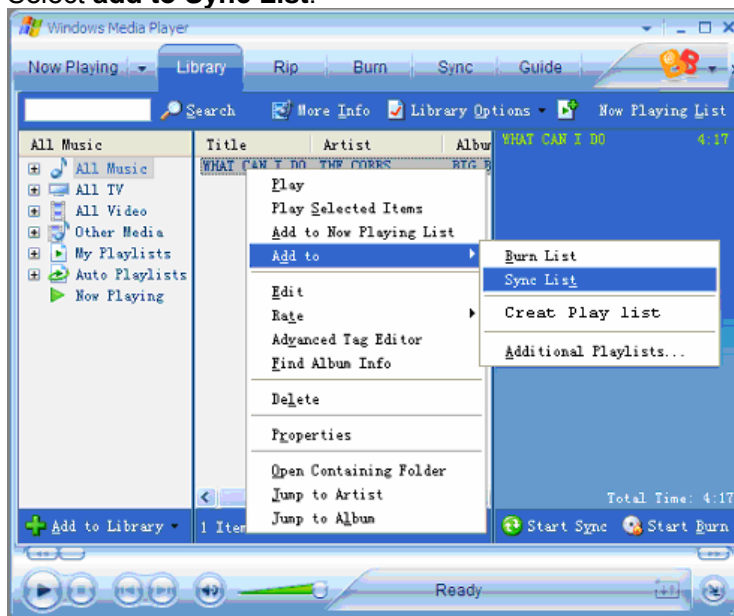
Click OK to run the “Windows Media Player” programme. Select **Media Device**. Play the Music in the Follower interface.



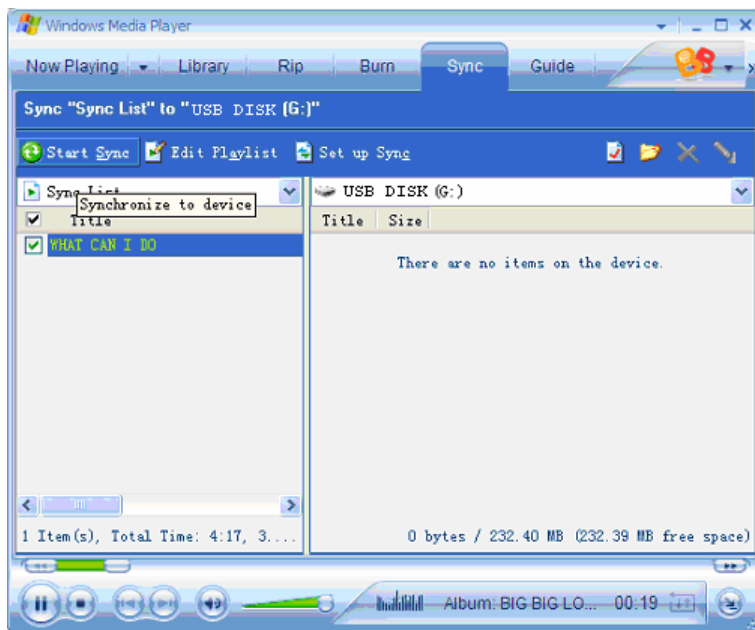
Select **Library**.



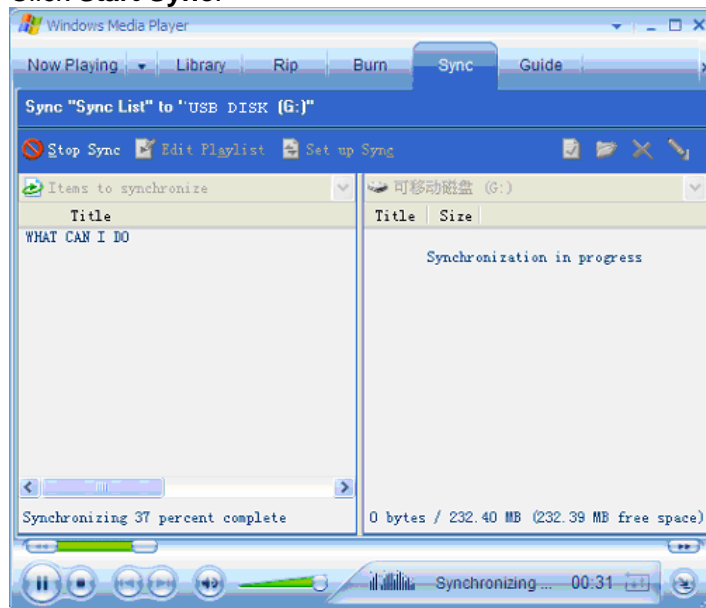
Select the music being played. Left click the mouse.
Select **add to Sync List**.



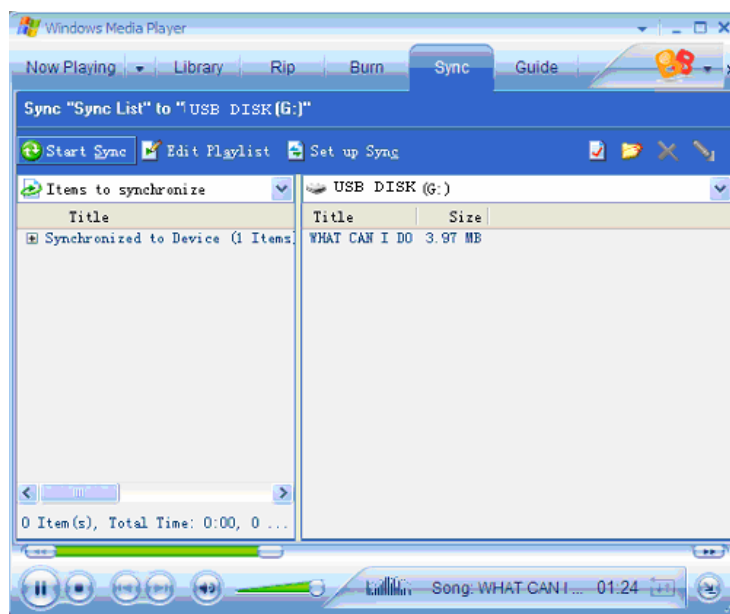
Select the **Sync** window.



Click **Start Sync**.



Synchronization in progress will be displayed after about 10 seconds.



After the music has been transferred to the MP3 Player, unplug the USB connector.
On MP3 Player select the Music mode.



Press **PLAY** to start playing your downloaded songs.