



YURAKU®

Yur.Photo 56B

5.6" Digital Picture Frame

User manual

Version 1.00



<http://www.yuraku.com.sg>



TABLE OF CONTENTS

INTRODUCTION	3
MAIN PRODUCT FEATURES	4
PRODUCT ILLUSTRATION	4
GETTING STARTED	5
USING MEMORY CARDS	5
INSERTING A MEMORY CARD	5
REMOVING A MEMORY CARD	6
USING USB DEVICES	6
PHOTO	7
SLIDE SHOW MODE	7
THUMBNAIL MODE	7
PHOTO SETTING	7
DISPLAY SETUp	8
CUSTOM SETUP	8
EXIT	8
FREQUENTLY ASKED QUESTIONS	9
PRODUCT SPECIFICATIONS	10
PRECAUTIONS AND MAINTENANCE	11
TAKING PRECAUTIONS	13
CLEANING THE DEVICE	15



INTRODUCTION

Thank you for purchasing the Yur.Photo 56B Digital Photo Frame.

Before operating the device, please read this manual thoroughly and keep it for future reference. This manual will help you use many of the exciting features to make your Yur.Photo 56B view more enjoyable.

The Yur.Photo 56B enables you to view digital pictures directly from your camera's memory card. You could enjoy watching pictures by slideshow function which has been provided by the Yur.Photo 56B. The Yur.Photo 56B is compatible with the following memory card formats: SD™ (Secure Disk), MMC™ (Multimedia Card), and MS™ (Memory Stick).

This manual contains important safety instructions and correct operational information, so please read all the information carefully before you use the device in order to avoid any unexpected accidents.

We take the responsibility to repair the Item if necessary; however we can not take responsibility for everything damaged by software operation or even any data missing during the repair.

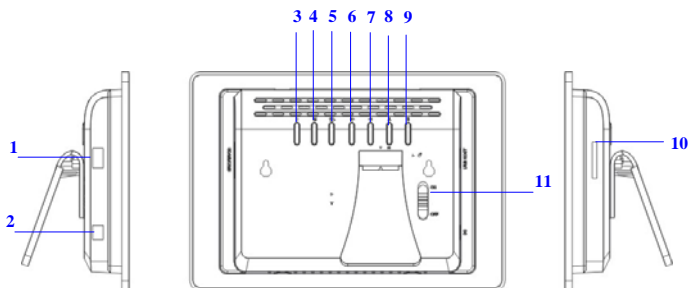
The software, hardware or users manual are subject to change due to improvements without prior notice. All rights reserved.



MAIN PRODUCT FEATURES

- High quality matrix TFT LCD.
- Decorative appearance, good quality.
- Supports digital picture format JPEG.
- Compatible with SD™/ MMC™ / MS™ memory cards, direct browsing of files from them.
- USB Host function: direct reading from a memory storage device when connected to the photo frame.
- Provides several functions: clear setup menu, thumbnails function, rotate picture, show file information, etc.

Product Illustration



1 USB port: USB 2.0 Host

2 DC port 9V 1.5A

3 PLAY/PAUSE/ENTER [▶] button

4 MENU [M] button

5 STOP/EXIT [⏏] button

6 Left [←] button

7 Right [→] button

8 Down/Next [A] button`

9 Up/Previous [B] button

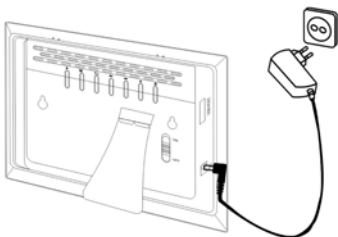
10 3-in-1 card slot (SD/MMC/MS)

11 Power on / off



GETTING STARTED

- Assemble the Yur.Photo 56B bracket to prop the unit up.
- Plug the power adaptor into an electrical outlet.
- Adjust the Power switch at the back of the Yur.Photo 56B to "ON".



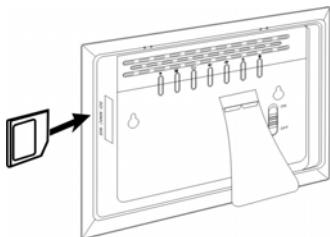
USING MEMORY CARDS

- Insert the memory card into the card slot on the Yur.Photo 56B to play the content of it. You may directly use the memory card of your digital camera to play the photos you shot.
- This device is compatible with the following memory cards:
Secure Digital Card (SD™)
Multimedia Card (MMC™)
Memory Stick (MS™)

INSERTING A MEMORY CARD

Insert the memory card with its label facing you. Slightly push it into the card slot.

Caution: Do not force the memory card in the slot.



REMOVING A MEMORY CARD

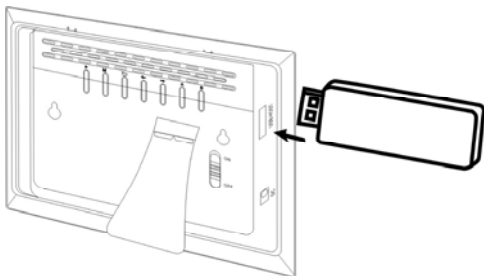
Simply insert the card into the card slot and unplug directly from the Yur.Photo 56B after use.

Please note: The Yur.Photo 56B will only recognize digital pictures with JPEG format. Other format of picture can be converted to this JPEG format in your PC first before transferring to this unit.

USING USB DEVICES

Connect the USB mass storage device to the Yur.Photo 56B by plug it into the USB port (USB HOST). Only USB memory sticks are supported, hard drives are not supported.

Please note: When a USB mass storage device and a memory card are simultaneously plugged into the Yur.Photo 56B, the USB device will be recognized prior to the memory card.





PHOTO

This Yur.Photo 56B will directly enter the slide show mode to display the photos when you insert card or USB mass storage devices.

Slide show mode

Press **▶** will enable zoom in/out function (from 100% **→** 150%

→ 200% **→** 25% **→** 50% **→** 100% and repeat)

At Zoom in function, Press **→**, **←**, **A**, **B** will navigate to different part of the photo.

At 100%, press **→**, **←** will rotate; Press **A** for next photo, **B** for previous photo.

When the picture is enlarge, slideshow will halt unless user set the photo back to 100% size or press **A**, **B** button for next photo.

Press **↶** to view thumbnail mode.

Press **M** will go to Setup menu.

Thumbnail mode

Press **→**, **←** will be able to select photo on the same page

Press **A** for next page and **B** for previous page

Press **▶** on any picture will start slideshow accordingly.

To confirm selection, simply press **▶** or Enter.

Photo Setting

<i>Main item</i>	<i>Sub-item</i>	<i>Description</i>
Interval time	5 sec, 10 sec, 15 sec, 30 sec, 1 min, 3 min.	The period after which the DPF will switch to the next picture
Transition Effect	No Effect	Photos are displayed in order without special effect.
	Cover Up/Down/Left/Right	Next photo covers the current photo upwards from the bottom/top/the right side/the left side.



	Uncover Up/Down/Left/Right	Current photo goes upwards/downwards/leftwards/rightwards slowly while next photo appears in the screen.
	Wipe Up/Down/Left/Right	Current photo folds upwards while next photo outspreads upwards/downwards/leftwards/rightwards.
	Push Up/Down/Left/Right	Next photo pushes away the current photo from the bottom/top/the right side/the left side.
	Random	System chooses the transition effect in random.

Display setting

Main item	Sub-item
Brightness	Normal, Bright, Soft
Contrast	-4, -3, -2, -1, 0, 1, 2, 3, 4
TFT Brightness	-7, -6, -5, -4, -3, -2, -1, 0, 1, 2, 3, 4, 5, 6, 7
TFT Contrast	-7, -6, -5, -4, -3, -2, -1, 0, 1, 2, 3, 4, 5, 6, 7
TFT Saturation	-7, -6, -5, -4, -3, -2, -1, 0, 1, 2, 3, 4, 5, 6, 7

Custom setting

Main item	Sub-item
OSD Language	English, French, German, Italian, Spanish, Portuguese, Dutch, Polish
Style	Style 1, Style 2, Style 3, Style 4,
Repeat Mode	Off, One, Folder, All
Default	Read

Exit

Select this option to exit the Setup mode.



FREQUENTLY ASKED QUESTIONS

Why the DPF could not display some files from my Flash card?

Some unpopular Flash cards are not compatible with the device. Use a card which matches with the DPF.

The file formats on your card might not be supported (only JPEG pictures are accessible). Provide files with the supported JPEG format.

There is a memory card inserted in the DPF but the device is not able to read the card. What can I do?

First, make sure that you are using a memory card type that is supported by the DPF.

Secondly, make sure that the memory card is inserted all the way into the correct slot.

The file formats on your card might not be supported (only JPEG pictures are accessible). Provide files with the supported JPEG format.

Please note: Some digital cameras save images into non-standard formats. Please refer to the operating manual of your camera.

Why do some pictures load faster than others?

Higher resolution pictures load slower. Use pictures with lower resolution to speed up the loading time.

Why does the system fail to work although power is on?

Probably the system could not work normally. Reset the DPF.

Why does the screen not show anything?

The device might not have been turned ON or the adaptor is not well connected.

Does the DPF have built-in memory?

NO. The DPF can not store files into a built-in memory. All files must be stored on memory card or USB device.

Can I insert multiple memory cards?

NO. The DPF only can be inserted one memory card.

**Can I rotate a picture on the screen?**

YES. Use the ROTATE buttons (LEFT, RIGHT, UP, DOWN) on the remote control to rotate a picture.

Please note: The rotated picture will return to its original orientation after you power off the DPF.

Can I adjust the colors of the picture?

NO. All color settings are preset at the factory. You can only adjust the brightness and contrast of the screen.

What is the best picture resolution displayed on the screen?

The best picture resolution for this DPF is 320 x 234.

Specification

Display	TFT LCD Panel size: 5.6 inch Screen size mode 4:3 Resolution: 320 x 234
I/O	DC in
Power adaptor	Input: 100~240V AC, 50~60Hz Output: 9V 1.5A DC
USB port	USB Host 2.0 Supports USB flash media
Supported peripheral devices	SD™ (Secure Digital), MMC™ (Multimedia Card), MS™ (Memory Stick)
Supported photo format	JPEG
Operating temperature	5°C ~ 35°C
Dimensions	194.5 x 152 x 34mm
Weight	395g



PRECAUTIONS AND MAINTENANCE

TAKING PRECAUTIONS

- To reduce the risk of electric shock or product damage, do not remove screws.
- Do not use this apparatus near water. Do not expose this unit to rain, moisture, dripping or splashing and no objects filled with liquids, such as vases, shall be placed near or on the apparatus.
- Do not install near any heat sources such as, radiators, heat registers, stoves, or other apparatus (including heat)
- Do not open covers and do not repair yourself. Refer to qualified service personnel.
- Avoid sandy places such as beaches.
- Please insert the plug to the jack completely to avoid electrostatic.
- Keep all lines connected well, safely and clearly.
- Avoid pressing the LCD, exposing it in sunshine.
- The machine can only play files with compatible formats.
- Music, pictures may have copyright playing. Those files without permission may infringe copyright law.
- Do not make metallic objects touch the DC plug when the machine is working.
- Avoid putting the DPF down on the top of cushions, sofas, or equipment such as amplifiers, otherwise it will be over working temperature of the apparatus.
- Do not take inserting cards away when the machine is reading them, otherwise it will cause memory files lost and system failure.
- Do not unplug directly when playing pictures.
- Do not rest the unit in your lap for a long time while using it. The unit can become hot and cause burn.
- You may feel uncomfortable after viewing pictures for a long time with repeating action.



- The DPF is not intended to run for 24 hours consecutively. The recommended time of use is between 8-10 hours one time.
- In order to supply better service, the contents of the operation manual may be revised.
- We will not explain the changes caused by any change on the machine's function.

CLEANING THE DEVICE

MAKE SURE THE DPF IS TURNED OFF

NEVER SPRAY OR POUR LIQUID DIRECTLY ONTO THE SCREEN OR PLASTIC CASING

To Clean the Screen

- Wipe the screen with a clean, soft, lint-free cloth. This removes dust and other particles.
- If it still is not clean, apply a small amount of non-ammonia, non-alcohol based glass cleaner on a clean, soft, lint-free cloth to clean the screen.

To Clean the Plastic Casing

- Use a soft, dry cloth. If it still is not clean, apply a small amount of non-ammonia, non-alcohol based, mildly non-abrasive detergent on a clean, soft, lint-free cloth to clean the surface.

To Clean the Frame

- Use a soft, dry cloth.

Disclaimer: Authorize Dealer does not recommend the use of any ammonia or alcohol-based cleaners on the LCD screen or plastic casing. Some chemical cleaners have been reported to damage the screen and/or display case. Authorize Dealer will not be liable for damage

- end -