

YUR.POWER

A-P225

Multicrystalline Solar Panels

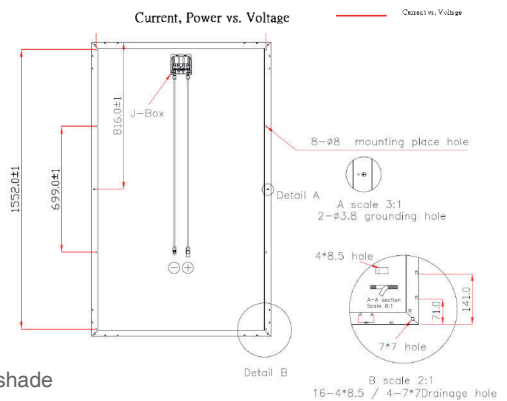
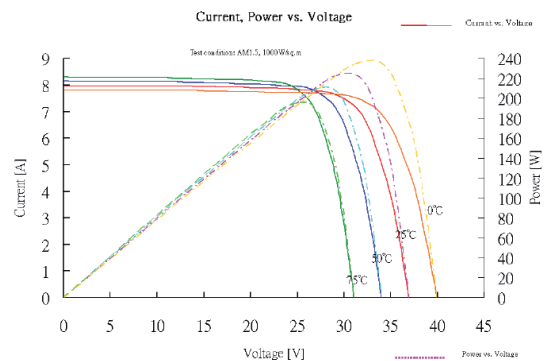
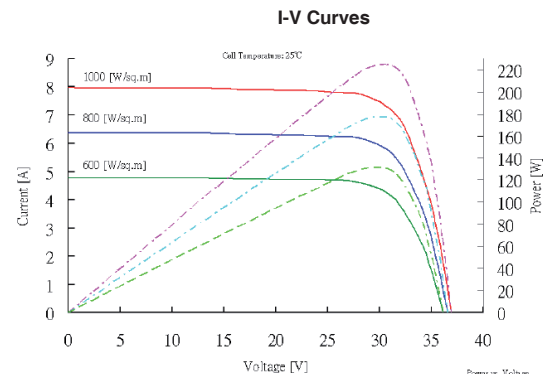
Specifications

• Panel Type	225 Wp Multicrystalline silicon photovoltaic module
• Maximum Power (Pmax)	225 W
• Voltage @ Pmax (Vpm)	29,277 V
• Current @ Pmax (Ipm)	7,685 A
• Open Circuit Voltage (Voc)	37,72 V
• Short Circuit Current (Isc)	8,31 A
• Output Tolerance	± 3 %
• Maximum System Voltage	1000 Vdc
• Series fuse rating	10 A
• Application	DC 24V system
• Efficiency of module	13,85 %
• Temperature Coefficients of Pmax (%)	-0,37 % /°C
• Temperature Coefficients of Voc (%)	-0,32 % /°C
• Temperature Coefficients of Isc (%)	+0,038 % /°C
• NOCT (Nominal Operating Cell Temp)	44,8 °C
• Operating Temperature	-40 to +85 °C
• Storage Temperature	-40 to +85 °C
• System Cell	6" Multicrystalline silicon
• No. of cells & connections	60 pcs in series (6x10)
• Module Size (WxLxH)	1632 x 995 x 50 mm
• Weight	Approximately 20,43 Kg
• Packing configuration	Horizontal
• Size of carton	1689 x 1071 x 955 mm
• Pallet quantity	18 pcs / pallet
• Container Load (20ft/40ft)	12 pallets / 28 pallets

Construction

• Front	High transmission low-iron tempered glass (3,2 mm)
• Back	PET / PET / PVF
• Encapsulates	EVA
• Junction Box Type	IP65, waterproof
• Bypass Diodes	3 diodes to avoid power decreasing by shade
• Output cable	4 mm ² cable with polarized waterproof tyco connectors (Negative 900 mm, Positive 900 mm)
• Frame (Material, Corners, etc)	Clear anodized aluminium, AL6063-T5
• Certification	IEC 61215 : 2005 + EN 61730-1 / EN 61730-2 : 2007

measured at STC (Standard Test Condition; 1000 W/m² irradiance, AM 1.5G and 25 °C)



Warranty Notice: 5 years on materials. 10 years of 90 % output, 25 years of 80 % output

EAN : TBA

Yuraku Pte Ltd
11 Collyer Quay,
#10-04 The Arcade, Singapore 049 317
Tel: +65 6238 2158
Fax: +65 6238 0076
Website: www.yuraku.com.sg

Yuraku S.r.l
Via Fratelli Rosselli 3/2
20019 Settimo Milanese (MILANO) Italy
Tel: +39 02 3351 4444
Fax: +39 02 3359 0580
Website: www.yuraku.it

Yuraku, SL
C/Florida Nº 1 (nave 4) Pol. Ind. Villapark
28670 – Villaviciosa de Odón – Madrid – España
Tel: +34 91 665 7423
Fax: +34 91 616 6324
Website: www.yuraku.es

create >> excite >> inspire

Terms and Specifications are subjected to change without notice.
©2011 YURAKU PTE LTD